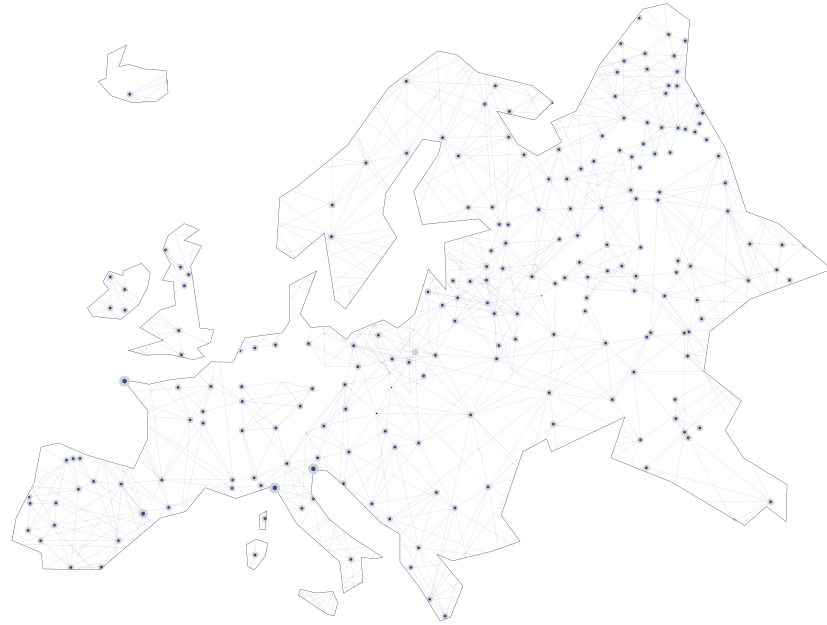


➤ EUROPE DEALER NETWORK



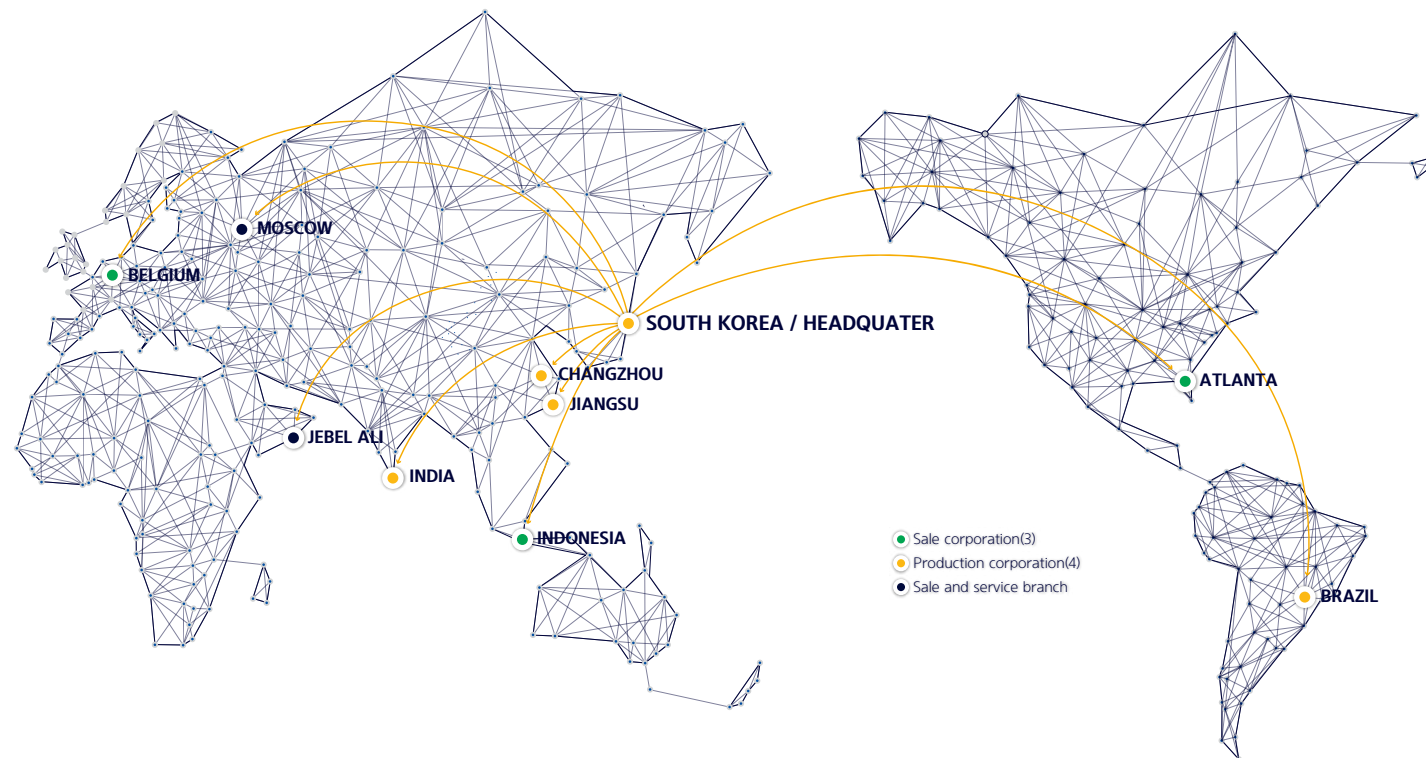
Internal Combustion Diesel Engine Forklift Truck

40/45D 50DN-9VC

35/40/45D 50DN-9VB

TECHNICAL SPECIFICATION

➤ HYUNDAI CONSTRUCTION EQUIPMENT GLOBAL NETWORK



BELGIUM



ATLANTA



JIANGSU

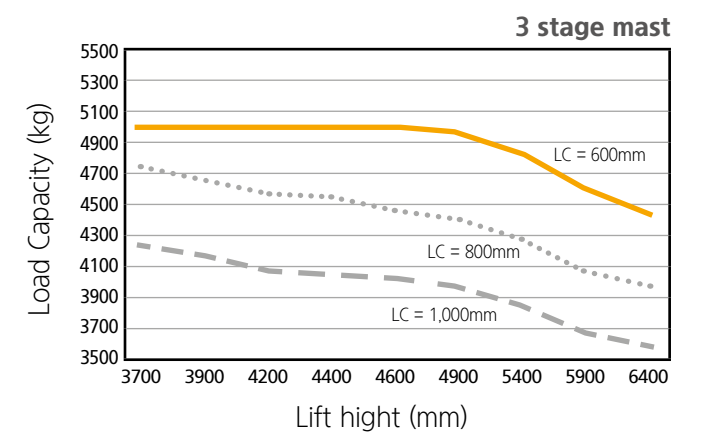
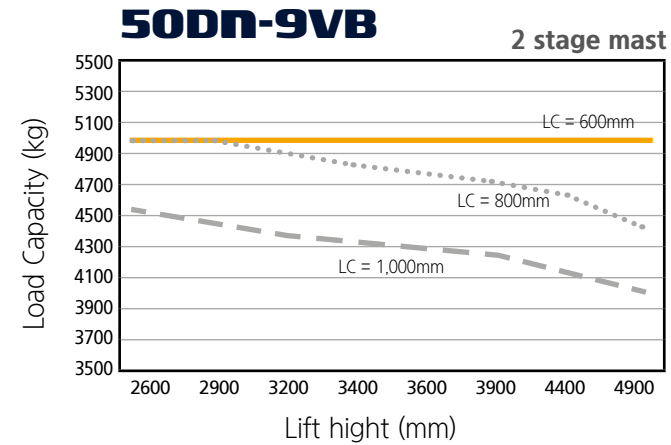
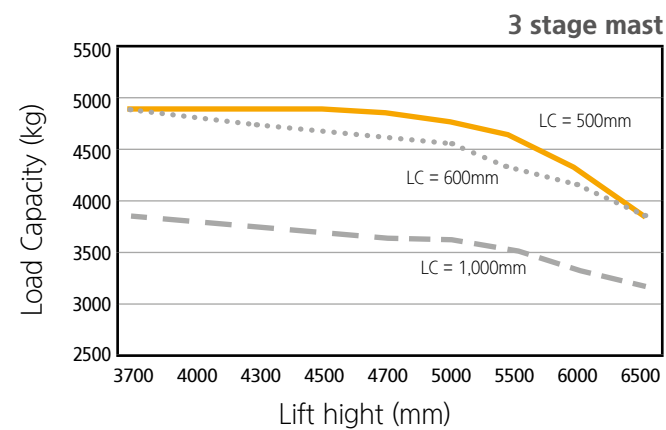
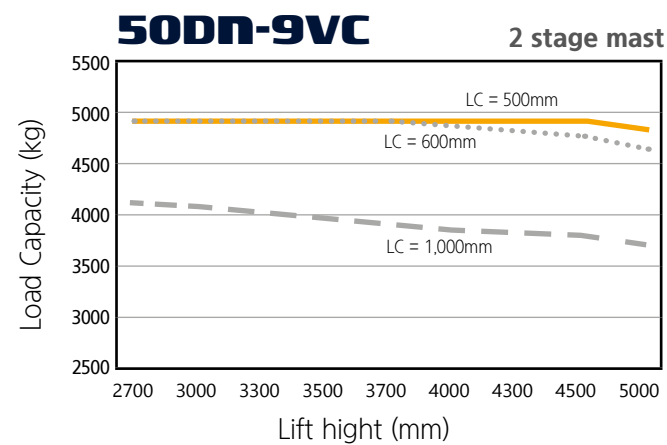
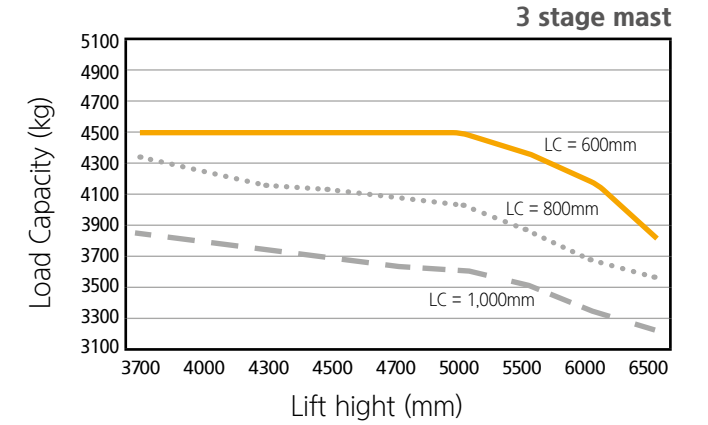
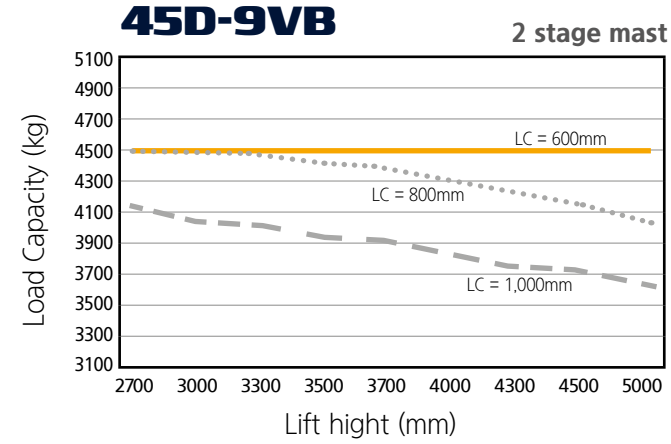
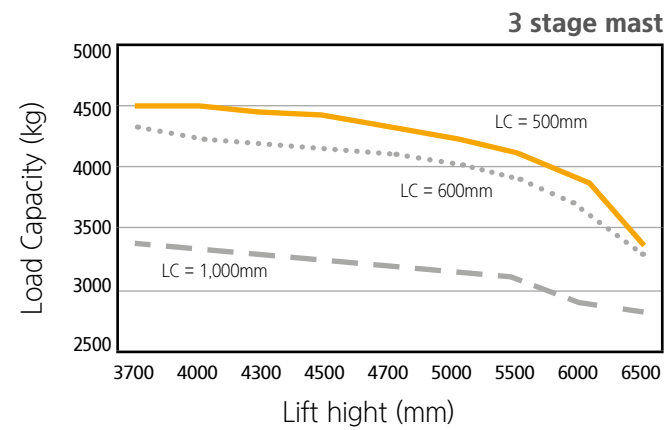
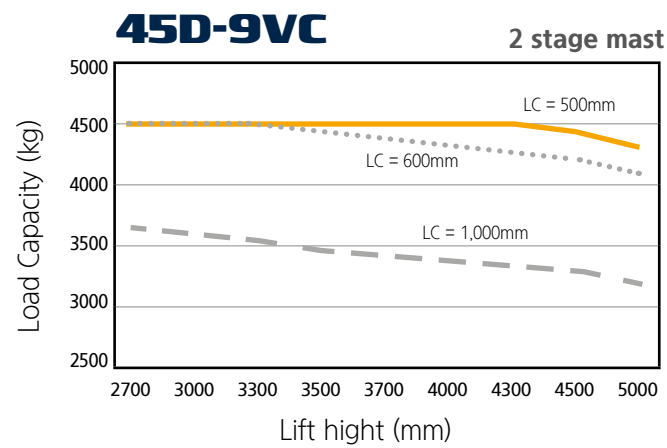
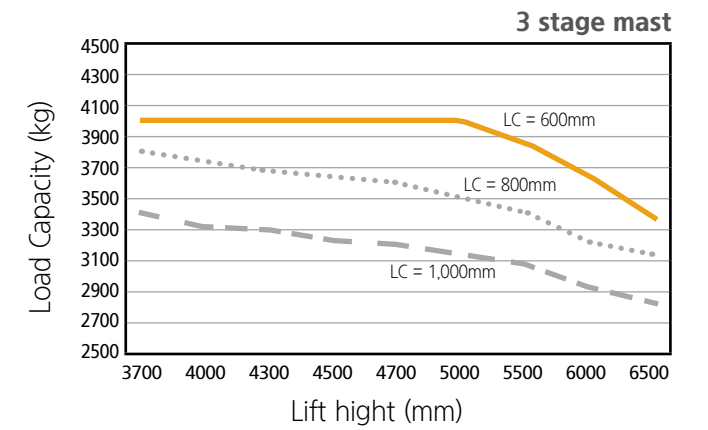
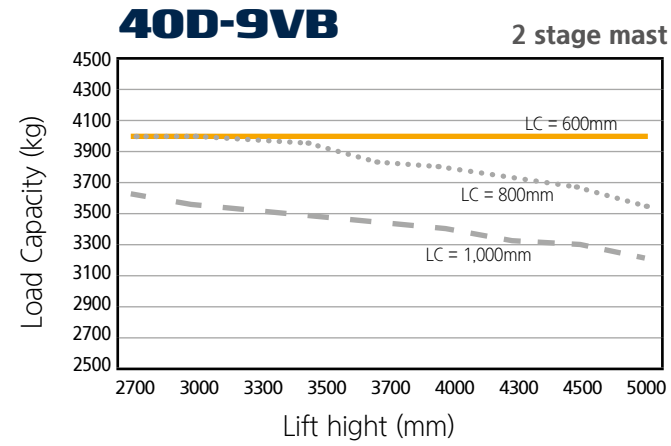
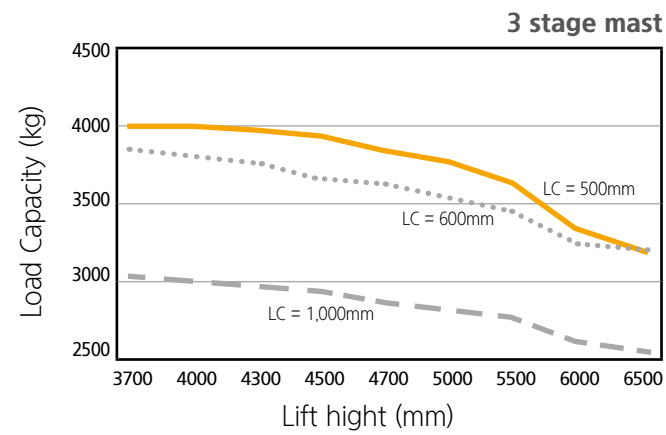
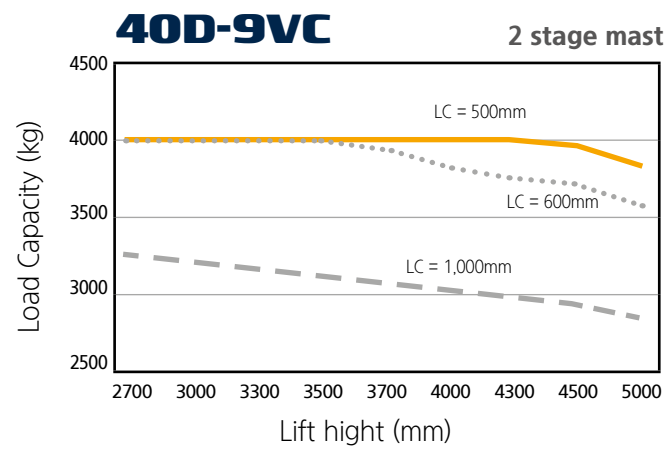
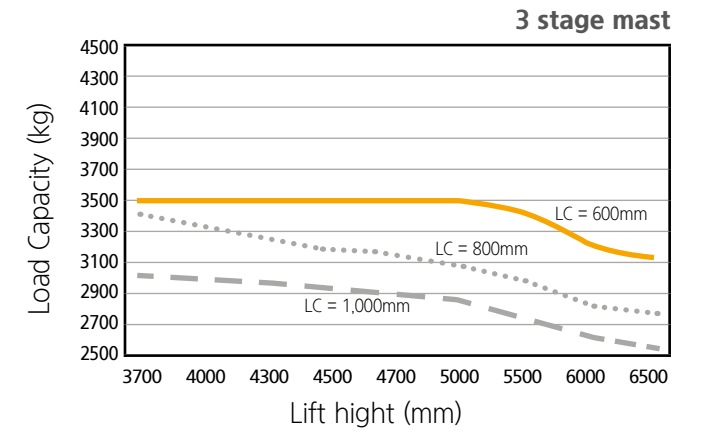
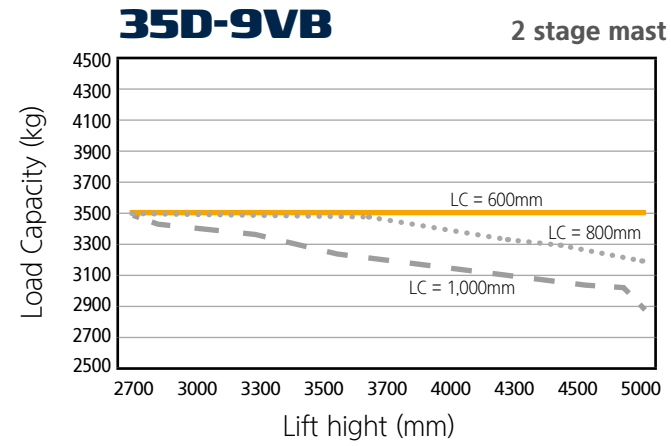
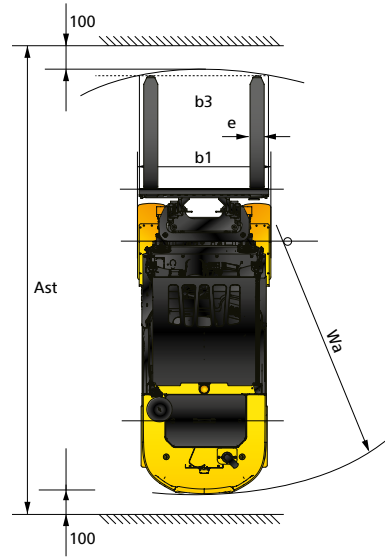
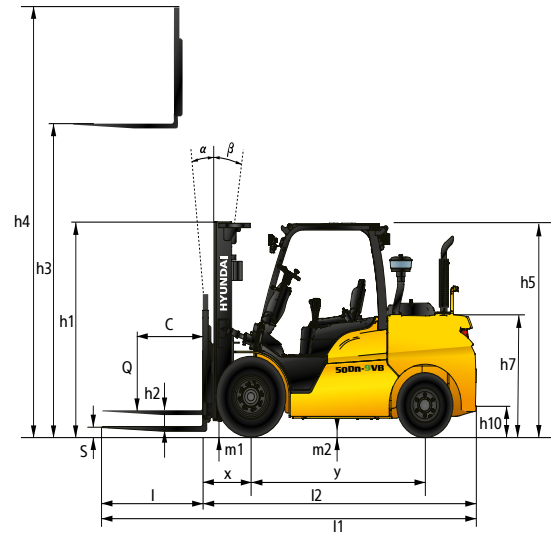


INDIA



BRAZIL





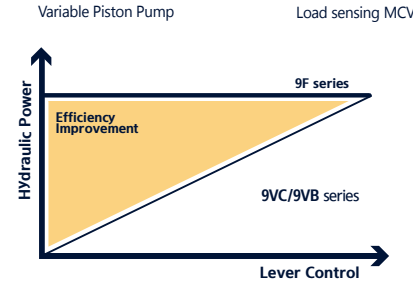
STANDARD & OPTION

	Part	Description	40D-9VC 35D-9VB	45D-9VC 40D-9VB	50DN-9VC 45D-9VB	50DN-9VB
OPERATION ROOM	OHG	Overhead Guard *40D-9VC, 35D-9VB : 2,350mm / 45D-9VC, 50DN-9VC, 40/45D-9VB, 50DN-9VB : 2,340mm	●	●	●	●
		Overhead guard with Rain Cover *40D-9VC, 35D-9VB : 2,360mm / 45D-9VC, 50DN-9VC, 40/45D-9VB, 50DN-9VB : 2,350mm	○	○	○	○
		Low Overhead guard with Rain Cover *40D-9VC, 35D-9VB : 2,230mm / 45D-9VC, 50DN-9VC, 40/45D-9VB, 50DN-9VB : 2,220mm	○	○	○	○
	Cabin	Cabin Options - One door, Two door	○	○	○	○
		Partial Cabin - Front glass with Wiper, Rear glass & Top Rain Cover	○	○	○	○
	A/C	Air Conditioner and/or Heater	○	○	○	○
	Seat	Full Suspension Synthetic leather Seat + Orange Belt, Seat Switch	●	●	●	●
		Additional options for Full Suspension Seat - Arm Rest, Back Rest, Belt Switch, Heat	○	○	○	○
		Non Suspension Seat + Orange Belt, Seat Switch	○	○	○	○
	Lever	Additional options for Non Suspension Seat - Belt Switch	○	○	○	○
Lever - Manual		●	●	●	●	
Ect.	Lever - Finger Tip	○	○	○	○	
	Radio & USB	○	○	○	○	
MAST & ATTACHMENT	Mast	Rear Horn	○	○	○	○
		Extinguisher	○	○	○	○
		2 Stage mast - Standard(V)	●	●	●	●
	Fork	2 Stage mast - Single full free(VF)	○	○	○	○
		3 Stage mast - Single full free(TF), Dual full free(TS)	○	○	○	○
	Carriage	1,220mm Fork for 40/45D-9VC, 50DN-9VC, 35/40/45D-9VB, 1,200mm Fork for 50DN-9VB	●	●	●	●
		Fork Options - 900mm~2,300mm	○	○	○	○
		Carriage - Narrow(1,300mm/Hook)	●	●	●	●
		Carriage options - Class IV	-	-	○	○
		- Narrow(1,330mm/Hook)	○	○	○	○
Attachment	- Wide(1,600mm/Hook)	○	○	○	○	
	- Wide(1,700mm/Hook)	○	○	○	○	
	- Special(1,460mm/Hook)	○	○	○	○	
MCV & Hoses	Cascade Side Shift	○	○	○	○	
	Hyundai Side Shift	○	○	○	○	
	Hyundai Fork Positioner - Independent	○	○	○	○	
TIRE	Tires	3 Spool MCV + attached piping for V330 mast	●	●	●	●
		MCV Options - 4 Spool (only for manual lever)	○	○	○	○
		MCV Options - 5 Spool (only for manual lever)	○	○	○	○
	Lamp	Attached Piping for All MCVs & Masts	○	○	○	○
		Tire - Pneumatic(Single for 40D-9VC, 35D-9VB, Double for 45D-9VC, 50DN-9VC, 40/45D-9VB, 50DN-9VB) * Wheel rim size : Single 15", Double 16"	●	●	●	●
		Tire Options	-	-	-	-
		- Solid	○	○	○	○
		- Non Marking	○	○	○	○
		- Front Pneumatic + Rear Solid	○	○	○	○
		- Front Solid + Rear Pneumatic	○	○	○	○
- Pneumatic Double(15" wheel rim)	○	○	○	○		
- Solid Double(15" wheel rim)	○	○	○	○		
Mirror	Working Lamp - Front Bulb	●	●	●	●	
	Working Lamp Options - Front LED, Rear LED, Rear Bulb	○	○	○	○	
	Rear Blue Spot	○	○	○	○	
Camera	LED Beacon Lamp	○	○	○	○	
	Mirror - Panorama	●	●	●	●	
	Mirror Options - L/H & R/H Back Mirror, Outside Mirror	○	○	○	○	
CONVENIENCE	-	Rear Camera only	○	○	○	○
		Knob-Switch with Direction & Horn	●	●	●	●
		Auto Tilt (Manual lever)	○	○	○	○
		Load Sensor	○	○	○	○
SAFETY	-	Hydraulic Pressure Display	●	●	●	●
		OPSS - Travel & Mast	●	●	●	●
		Master Switch to cut off electricy from battery	●	●	●	●
OTHERS	-	Hazard Switch	○	○	○	○
		Plastic Side Cover	●	●	●	●
		Steel Side Cover	○	○	○	○
		Rear Tire Cover	●	●	●	●
		Under Cover	○	○	○	○
		Fuel Cap with Key	●	●	●	●
		Hydraulic Oil - ISO VG46 (Hyundai genuine long life hydraulic oil)	●	●	●	●
Hydraulic Oil Options - ISO VG68 for Tropical, ISO VG32 Cold Area (Hyundai genuine long life hydraulic oil) ISO VG15 Cold Area (Conventional hydraulic oil)	○	○	○	○		
Accumulator	○	○	○	○		

● : STD / ○ : OPT

PRODUCT FEATURE

Main hydraulic component



Productivity & Durability

- The 9VB series is equipped with an HMC 54.4kW diesel engine, which meets EU Stage5 regulations on gas and achieves both environment friendly and cost saving effects due to its low fuel consumption rates.
- The TCO is dramatically reduced: A load sensing (piston pump) type hydraulic system with an optimized engine is applied.
 - Improvement of fuel efficiency and workflow : 16.7% and 4%, respectively.
- The power transmission capability of clutch pack is improved by 25%, T/M oil is increased by 4L, and durability under heavy load operation is expanded.
- Extended wheel base Running stability and continuous working hours are improved, and temperature increase risk during operation is reduced.

Enhanced Safety

- Auto Parking Brake: When the engine stops, the parking brake works automatically to prevent safety accidents caused by human error.
- HAC (Hill Start Assist Control): Backsliding is prevented upon restarting on a slide.
- OPSS (simultaneously operated with Auto Parking): Driving, lifting, and tilting are restricted when the operator leaves the driver's seat.
- Password setting: Unauthorized use of forklifts is prohibited.

Outstanding Operability

- The optimized size of the engine and LS hydraulic system reduce noise and vibration to the operator.
- Reduced handle diameter and the Danfoss 4th generation Obitrol are applied to improve steering, reduce noise, and improve the reverse rotation jam.
- Deluxe suspension seat : Cushion adjustment and ELR seat belt of Grammer seats are used.
- New fingertip (OPT), which has built in Dither control and controller current feedback systems, ensures improved response time, fine tuning, and adaptability to usage temperature.

Easy Service

- Maintenance of the exhaust gas aftertreatment device is done with screen disassembly only, without weight removal.
- Engine diagnosis without any additional diagnostic tool and consumables replacing interval setting.
- Improved maintainability, thanks to a horizontally placed MCV with an embedded emergency lowering screw.
- Waterproof and dustproof fuse & relay box to prevent dust or water contamination.